

# PVE[ ] [ ] [ ] [ ]

[ ] [ ] [ ] [ ] [ ] [ ]

```
qm unlock <VM ID>
```

```
qm stop <VM ID>
```

## backup([ ])

```
vzdump 101 102 107 108 115 114 112 104 110 --compress lzo --mailnotification always --mode snapshot --quiet  
1 --storage Backup --mailto mail@domain.com
```

## [ ]agent

```
apt install qemu-guest-agent
```

## node[ ] [ ] [ ] [ ]

```
service rrdcached stop  
rm -rf /var/lib/rrdcached/*  
service rrdcached start
```

[ ] [ ] [ ]

```
service rrdcached status
```

## TASK ERROR: cluster not ready – no quorum?[ ] [ ] [ ] [ ] [ ]

[ ] [ ] [ ] [ ] [ ] [ ] **pve** [ ] [ ] [ ] [ ] [ ] [ ] [ ] **cluster** [ ] [ ] [ ] [ ] [ ] **pve** [ ] [ ] [ ] [ ] [ ] **2** **nodes** [ ] [ ] [ ] [ ] [ ] [ ]

[ ]

```
pvecm status ---[ ] [ ]Quorum: 2 Activity blocked  
pvecm expected 1 ---[ ] [ ] [ ] [ ] [ ]1 [ ] [ ] [ ] [ ]/etc/pve  
service pve-cluster restart ---[ ] [ ] [ ] [ ]
```

[ ] [ ] [ ] [ ] [ ] ([ ] )node

EX:[ ] [ ] [ ] [ ] [ ] node

```
pvecm delnode (node name)
```

## 2FA

```
/etc/pve/user.cfg
```

## raid1 or 5

```
sgdisk -R newdisk olddisk  
sgdisk -G newdisk  
dd if=/dev/olddisk1 of=/dev/newdisk1  
zpool replace rpool olddisk2 newdisk2 (f)
```

## pve CVE-2018-3646

```
echo off > /sys/devices/system/cpu/smt/control CPU
```

## pve

```
ls -l /dev/disk/by-id/  
vi /etc/pve/qemu-server/xxx(VMID).conf  
virtio0: /dev/disk/by-id/ata-ST2000DL003-9VT166_5YD1ZYK5,size=2000G
```

```
#
```

## Pve virtio iso

```
https://fedorapeople.org/groups/virt/virtio-win/direct-downloads/archive-virtio/
```

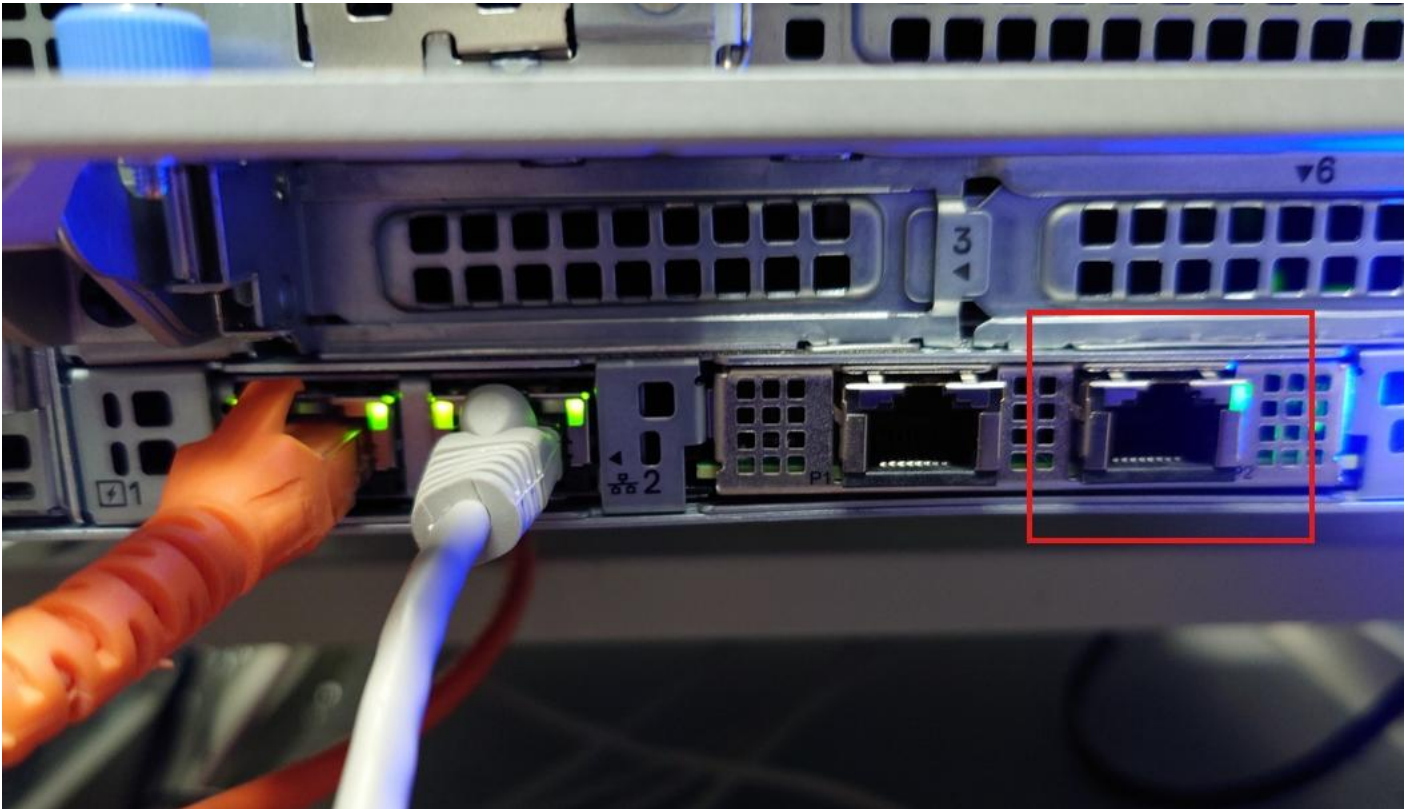
## 

## ethtool

```
apt install ethtool -y
```



## 

```
ethtool --identify
```



□□ : □□□□□□□□

switch

```
lspci | grep -i 'eth'
```

ethtool[ ]

```
ethtool -i [ ] # [ ]
ethtool [ ] # [ ] ethtool --identify [ ] [ ]
```

☐ ☐ ☐ ☐ ☐ & ☐ ☐ ☐

--	--	--	--	--	--

BIOS  VT-d & VMX   
 Grub

```
nano /etc/default/grub
```

```
GRUB_CMDLINE_LINUX_DEFAULT="quiet intel_iommu=on"
```

```
pci=
```

```
GRUB_CMDLINE_LINUX_DEFAULT="quiet intel_iommu=on pci_acs_override=downstream"
```

```
grub
```

```
update-grub
```

```
dd
```

```
img.iso PVE
```

```
nano /etc/pve/qemu-server/[ ].conf
```

```
pve
```

```
qm migrate <ID> <VMID> --online --migration_network x.x.x.0/xx
```

```
PCI
```

```
amd intel cpu grub
```

**Intel:**

```
GRUB_CMDLINE_LINUX_DEFAULT=""
```

```
intel_iommu=on
```

```
GRUB_DEFAULT=0
GRUB_TIMEOUT=5
GRUB_DISTRIBUTOR=`lsb_release -i -s 2> /dev/null || echo Debian`
GRUB_CMDLINE_LINUX_DEFAULT="quiet intel_iommu=on"
GRUB_CMDLINE_LINUX=""
```

**AMD:**

```
GRUB_CMDLINE_LINUX_DEFAULT=""
```

```
amd_iommu=on
```

update-grub

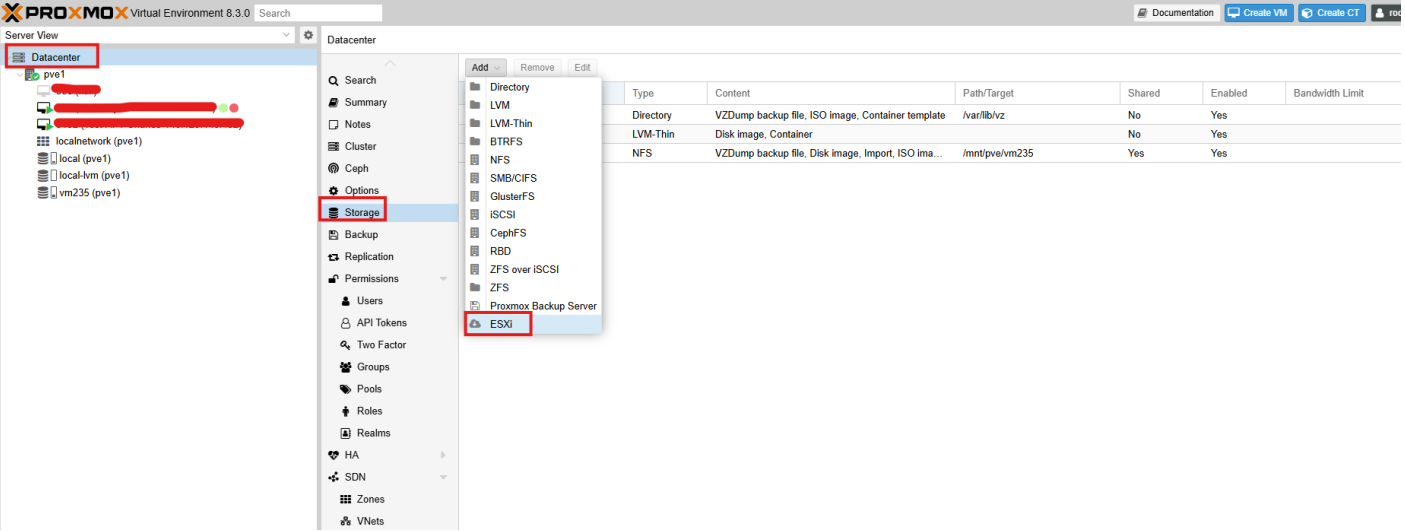
etc/modules

```
#vfio
#vfio_iommu_type1
#vfio_pci
#vfio_virgfd
```

VMWarePVE

1:

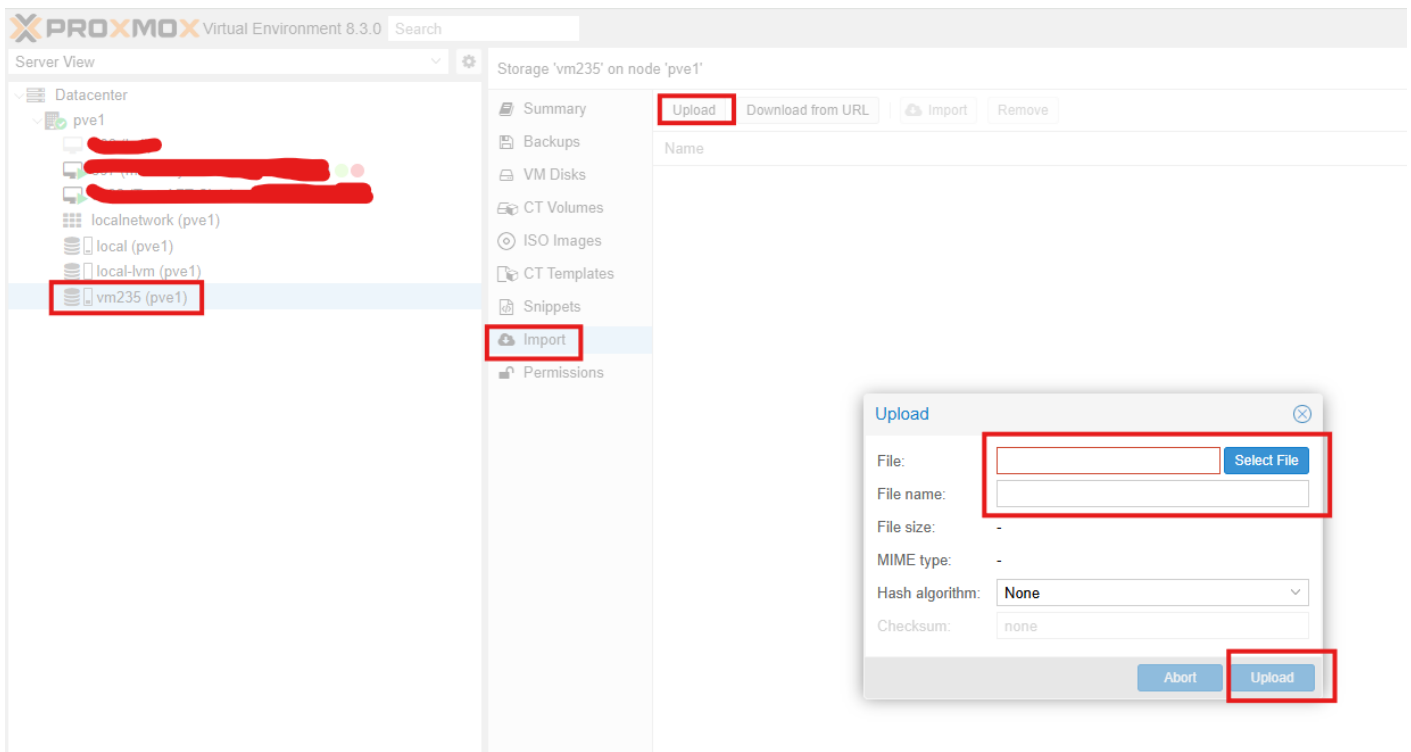
VMWare8.0PVEB.2GUI



VM

2:

GUIOVA PVE



Import PVE

VMWare OVA OVF OVA

```
tar -cvf VM.ova VM.ovf VM.vmdk VM.mf
```

VM

OVF (vmdk mf) PVE

1. scp PVE

```
scp <PVE> root@<IP>:PVE
```

2. qm importovf ovf

```
qm importovf {vmid} {VM name}.ovf {target storage}
```

```
qm --f raw, vmdk, qcow2 --cpu x86-64-v2-AES --scsihw virtio-scsi-
single????
?????GUI???????
```

3. Windows SATA IDE Unset SATA ide

3:

clonezilla qm disk import

```
qm disk import {target VMID} {vmdk file} {target storage}
```

qemu importovfcpu format

unsetWindows sata ide

qemu-img vhdx qcow2

```
qemu-img convert -O qcow2 { } { }
```

```
qemu-img convert -f { } -O { }  1000 1000
```

Local-Lvm local

1. local-lvm

2. cmd

```
lvremove pve/data
```

```
lvextend -l +100%FREE -f pve/root
```

```
resize2fs /dev/mapper/pve-root
```

3. local

4. local-lvm

Revision #8

Created 27 October 2024 06:08:02 by Ron

Updated 13 May 2025 08:46:23 by Ron